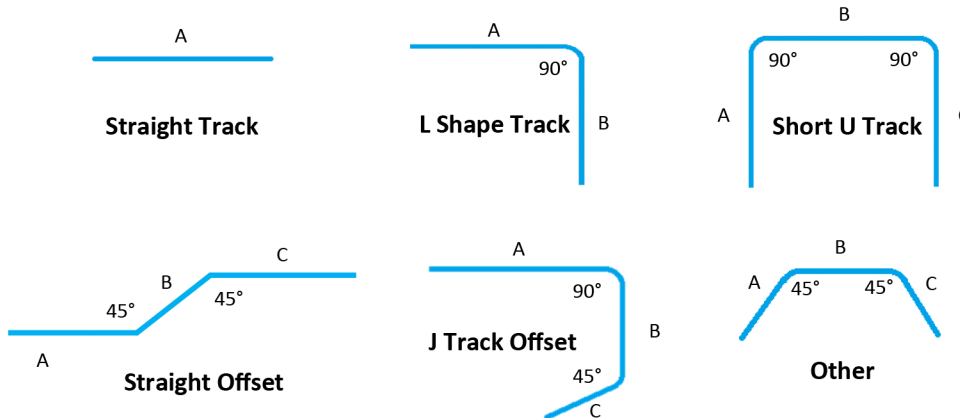


# Measurement Guide

## Track

**Step 1:** For each track, determine the layout according to our template or use a custom drawing. The layouts should represent a top-down view (as opposed to looking up at the ceiling).



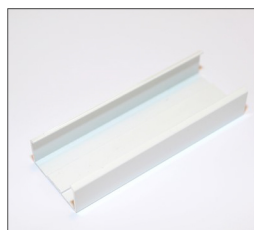
**Step 2:** Indicate the length for each segment in a clockwise fashion using "A", "B", "C", etc.

**Step 3:** Indicate 45° or 90° bends at each necessary location.

**Step 4:** Include splices before and after each bend and after each straight section in excess of 8 feet.

**Step 5:** All tracks should have 2 end-caps.

**Step 6:** Include 2 carriers per foot of track plus 5 additional (Example: 10ft track x 2=20 +5=25)



Splice



End-cap



Carrier

